

# The GEOALIGN<sup>®</sup> System

A Bard Technology

## WHAT IS THE GEOALIGN<sup>®</sup> SYSTEM?

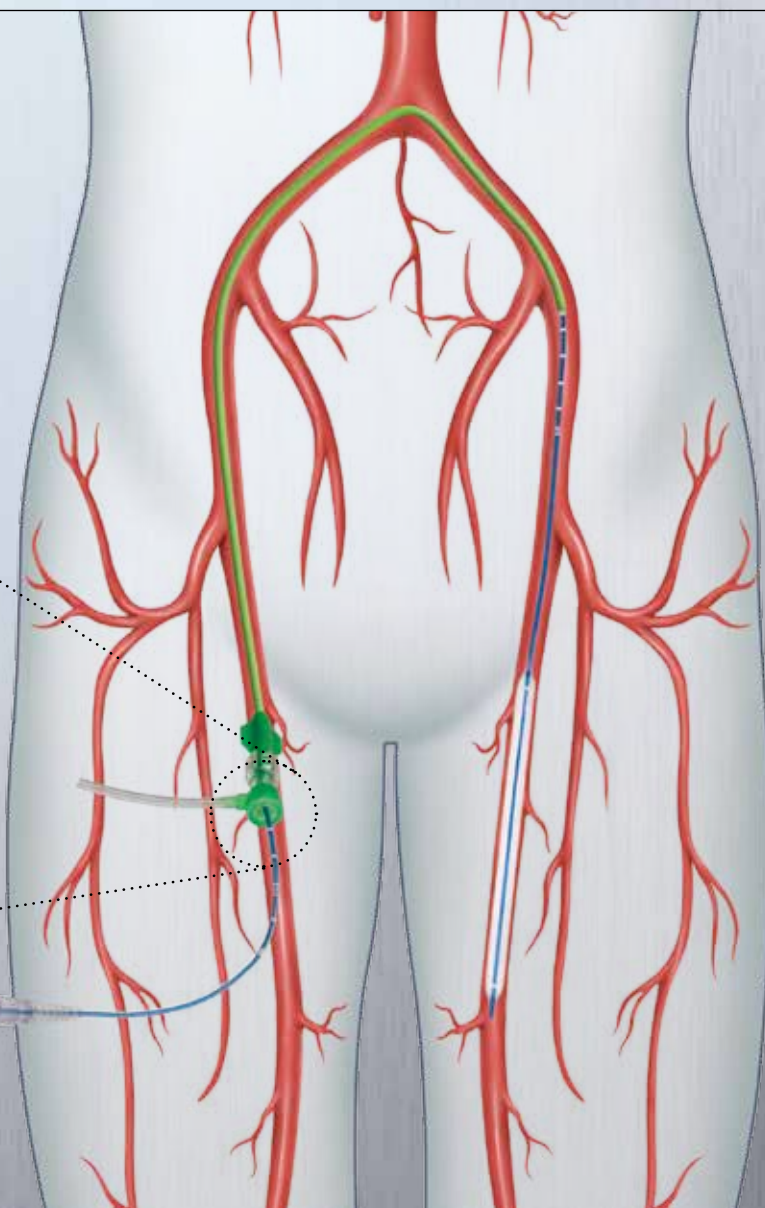
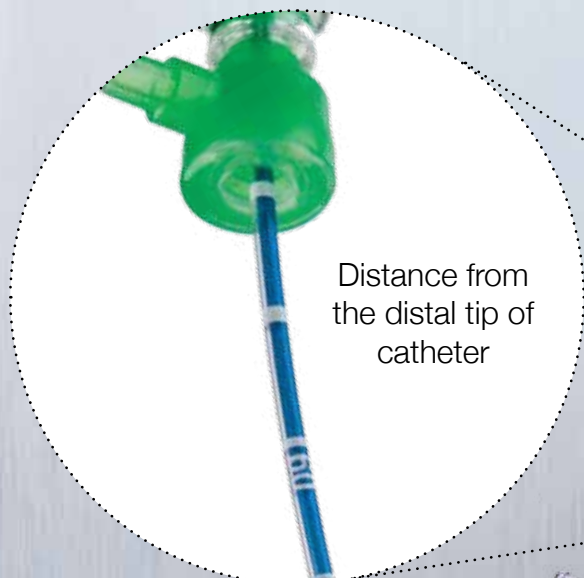
70

Distance from the distal tip of catheter

Marker bands denoted every 1 cm

## WHERE IS THE GEOALIGN<sup>®</sup> SYSTEM USED?

- Non-radiopaque **ruler** on the catheter shaft measured from the distal tip<sup>1</sup>
- Designed to facilitate **repeatable catheter alignment at the lesion**<sup>2</sup>

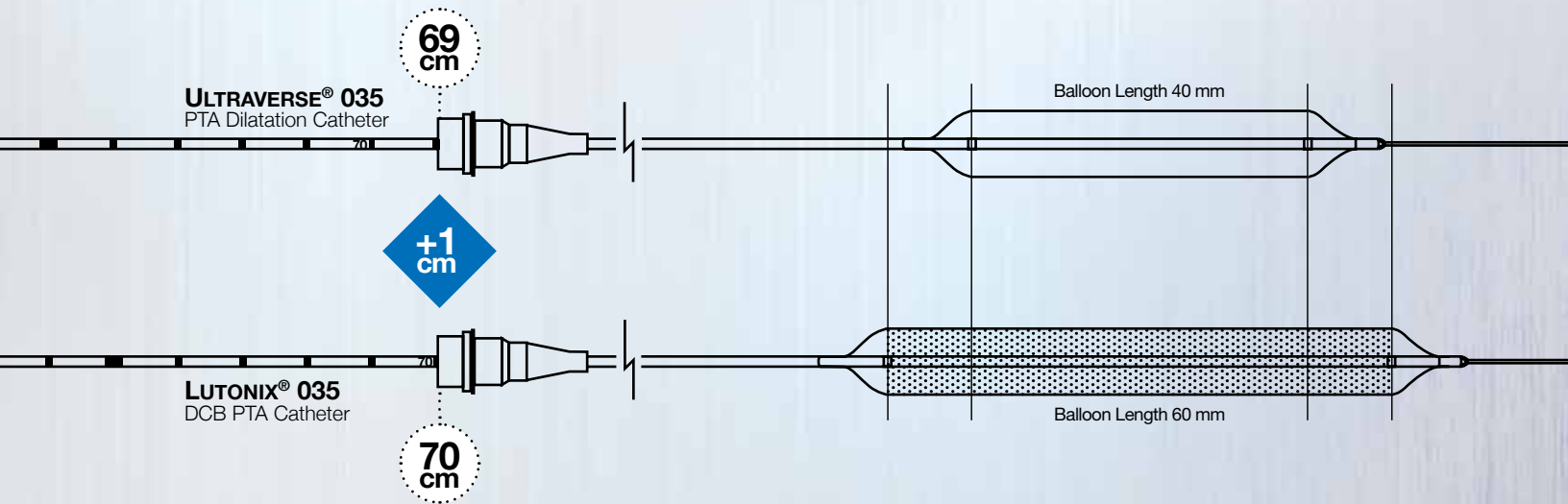


<sup>1</sup> When the catheter is exposed to the vascular system, the location of the balloon should be confirmed while under high quality fluoroscopic observation. GEOALIGN<sup>®</sup> Markers are not a replacement for fluoroscopy.

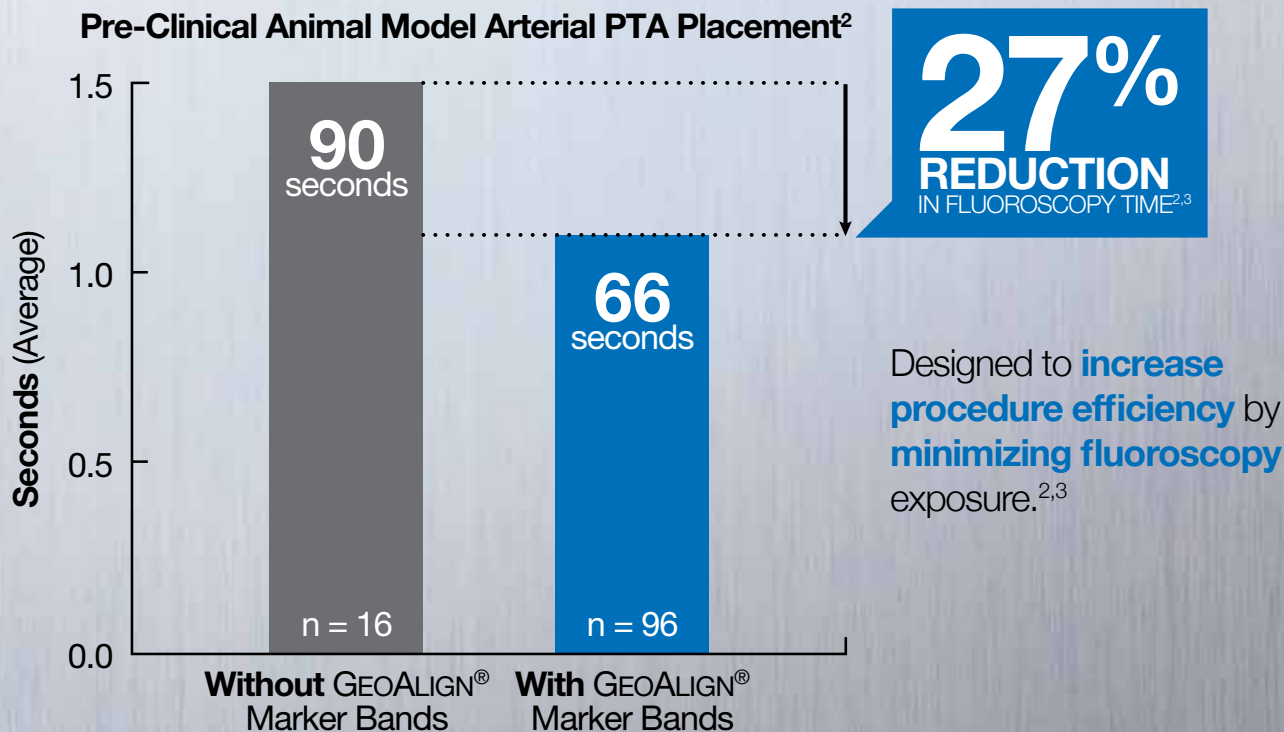
<sup>2</sup> Animal study (repeat PTA in swine artery) was performed by 3 physicians who tested the LUTONIX<sup>®</sup> 035 DCB (no drug) and the ULTRAVERSE<sup>®</sup> 035 PTA Catheter, both with GEOALIGN<sup>®</sup> Markers, to POBA with no GEOALIGN<sup>®</sup> Markers (n=112, test n=96 (with an average placement time of 66 seconds), control n=16 (with an average placement of 90 seconds)). Animal data on file. Bard. Animal test results may not be indicative of clinical performance. Different test methods may yield different results.

# HOW TO USE THE GEOALIGN® SYSTEM

The **GEOALIGN® Marking System** on the LUTONIX® 035 DCB is designed to **facilitate repeatable catheter alignment at the lesion**.<sup>1,2</sup>



## HOW CAN THE GEOALIGN® SYSTEM MAKE A DIFFERENCE?



<sup>1</sup> The LUTONIX® 035 DCB should extend a minimum of 5 mm proximally and distally from the lesion and injury segment.

<sup>2</sup> Animal study (repeat PTA in swine artery) was performed by 3 physicians who tested the LUTONIX® 035 DCB (no drug) and the ULTRAVERSE® 035 PTA Catheter, both with GEOALIGN® Markers, to POBA with no GEOALIGN® Markers (n=112, test n=96 (with an average placement time of 66 seconds), control n=16 (with an average placement of 90 seconds)). Animal data on file. Bard. Animal test results may not be indicative of clinical performance. Different test methods may yield different results.

<sup>3</sup> When the catheter is exposed to the vascular system, the location of the balloon should be confirmed while under high quality fluoroscopic observation.

Please consult product labels and instruction for use for indications, contraindications, hazards, warnings and precautions. Rx only. Bard, Advancing Lives and the Delivery of Health Care, and GeoAlign, Lutonix, and Ultraverse are trademarks and/or registered trademarks of C. R. Bard, Inc. or an affiliate. Copyright © 2015, C. R. Bard, Inc. All Rights Reserved. Illustration by Mike Austin. Copyright © 2015. All Rights Reserved. S120719R1